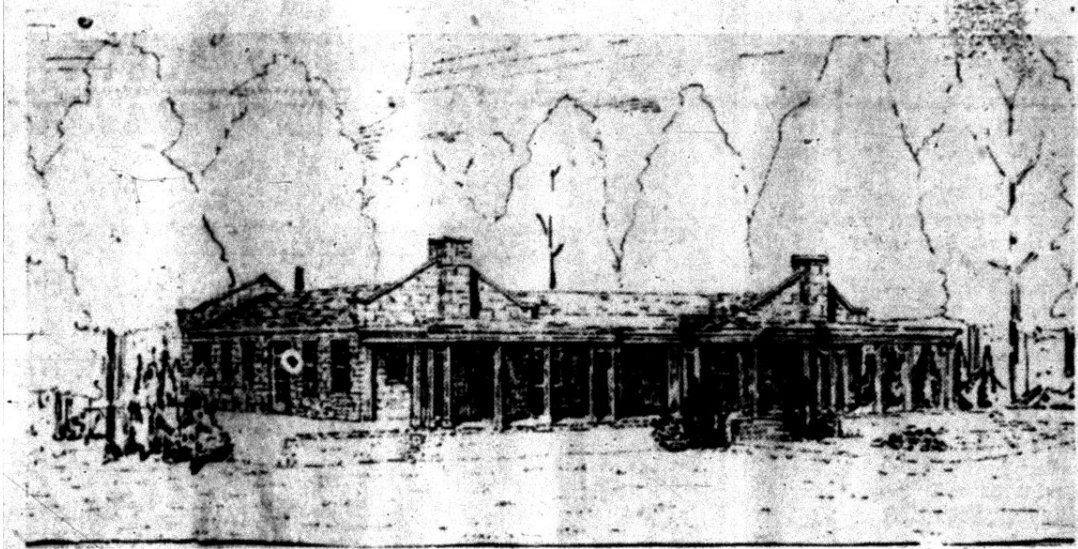


NEW CLUB HOUSE NEARS COMPLETION



The Linton municipal golf course club house will be completed and available for use and the course itself will be in the "best shape in its' history."

Such was the cheering message which was delivered today to golfers of this territory. The favorable spring weather of the past few weeks has been given the "yen" to local followers of the ancient Scotch sport, and after next Sunday, when the "grand opening" of the course will be held, the golfers are expected to flock to the recreation area in large numbers.

Extensive improvements have been under way during the past few months at the "shinny" area. The greens, according to Bobby Hess, local professional, are in good shape. Nine thousand feet of tile has been laid this winter to improve the conditions of the greens and fairways, and many other improvements have been made.

Landscape Work.

Employees of the Federal Works Progress Administration have been busy in landscaping work at the recreation area, and already at least 500 new maple trees have been planted. WPA employes are at work now planting pine trees, shrubs, and doing many other things which will add to the beauty and utility of the course.

The course, it was announced today, will be opened for playing on about April 15, and the "grand opening" of the club house will be observed on about June 15, if the present schedule of building progress is followed by the workers who are employed on the project.

Another aid to the beauty and usefulness of the course which will be completed within a short time is the cleaning of the woods surrounding the new club house for use as a public picnic ground. During this spring and summer many picnickers and recreation seekers are expected to flock to the woods near to the new club house to spread their picnics and to enjoy the shade of the many trees there.

This new picnicking ground will be an addition to the present outing

facilities available to residents of this territory through the Linton city park system. The public, it was announced, will be invited to take advantage of the tables which will be erected in the woods, and to use the city water which will be open for public use.

Drive Is Staged

The annual drive for members for the golf course club is now under way, and, according to reports, good responses have been received to the campaign.

Schedules of fees for membership were announced today. They are as follows: family ticket, \$20; family, non-resident, \$15; single, \$15; single, non-resident, \$10. A course fee of 35c for playing nine holes will be charged on week days, and on Sundays and holidays a fee of 50c per nine holes or \$1 for the day will be assessed.

The new club house which is in the process of construction at the course will have a total value, when completed, of \$30,000. It will be of stone construction, 42 feet by 70 feet, and will have terracing and landscaping in proportion.

The building will include a basement under the entire floor, complete with showers and lockers for men and women. It will contain a large dining room 18 by 30 feet and a lounge room 20 feet by 30 feet.

Henry Dietz is the architect in charge of the project, William Rice is construction foreman, and Bobby Hess, local golf professional, is the landscape foreman.

All of the cost of labor on the house is being furnished by the Federal Works Progress Administration, and the cement, lime, roofing, flooring and other materials likewise have been furnished by federal funds.

Former Bland Home.

The old Linton country club is the former home of Oscar Bland, and was operated under private management for several years. Later, it was re-organized and established on a municipal basis. It was first purchased on option

by the City of Linton in 1934, and WPA labor was used to give improvements to the property. At this time grass greens were planted to substitute for the sand greens which previously had proved more or less unsatisfactory, and a water system was installed. At the present time the greens have an estimated value of about \$9,000.

The golf course was purchased by the city in November, 1936 for \$4,000, with a down payment of \$800 and yearly payments in the amount of \$500.

During the year of 1937 about \$1200 was received from membership and playing fees and this amount was sufficient to provide the funds for all operating costs.

The new club house, when completed, will be unique in many respects. Its main component is natural sandstone, quarried in the city quarry, which is operated through WPA funds. According to local enthusiastic supporters, it will be the finest between Terre Haute and Bedford.

ESTATE INCREASES; CLAIMS LIKEWISE

PHILADELPHIA (U.P.) — Despite large expense incurred by year-long hearings on claims to the \$20,000,000 snuff fortune left by the late Mrs. Henrieta E. Garrett, the estate is increasing daily.

Payment of salaries of the master, examiners and seven other employes and expenses of the hearings were far below the income from the estate last year.

When the hearings started in January, 1937, there were 17,000 claimants to the fortune. Their number already has increased to more than 23,000 and is mounting daily.

Transcription of testimony at the more than 100 hearings and other records fill 20,500 pages of 35 printed volumes.

Mrs. Garrett died in 1930 and disposed of only a small fraction of her fortune in a memorandum to her attorney.